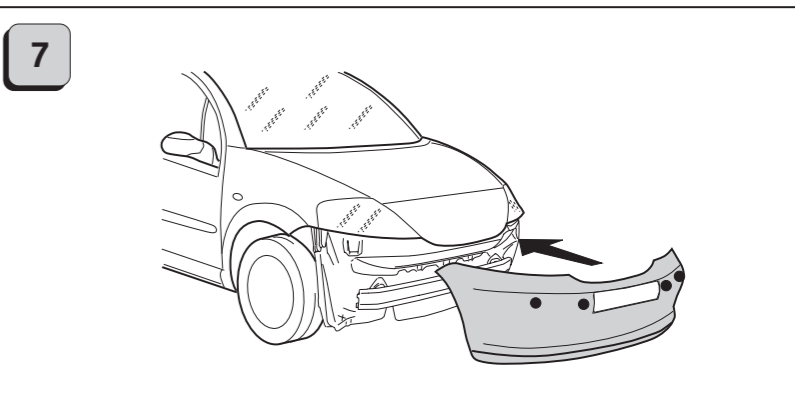
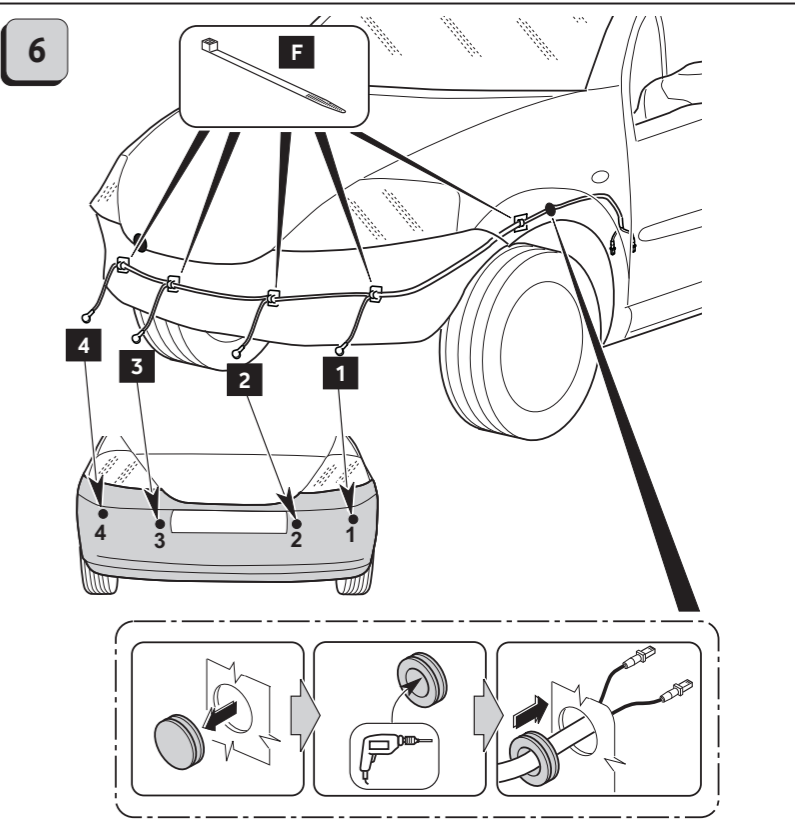
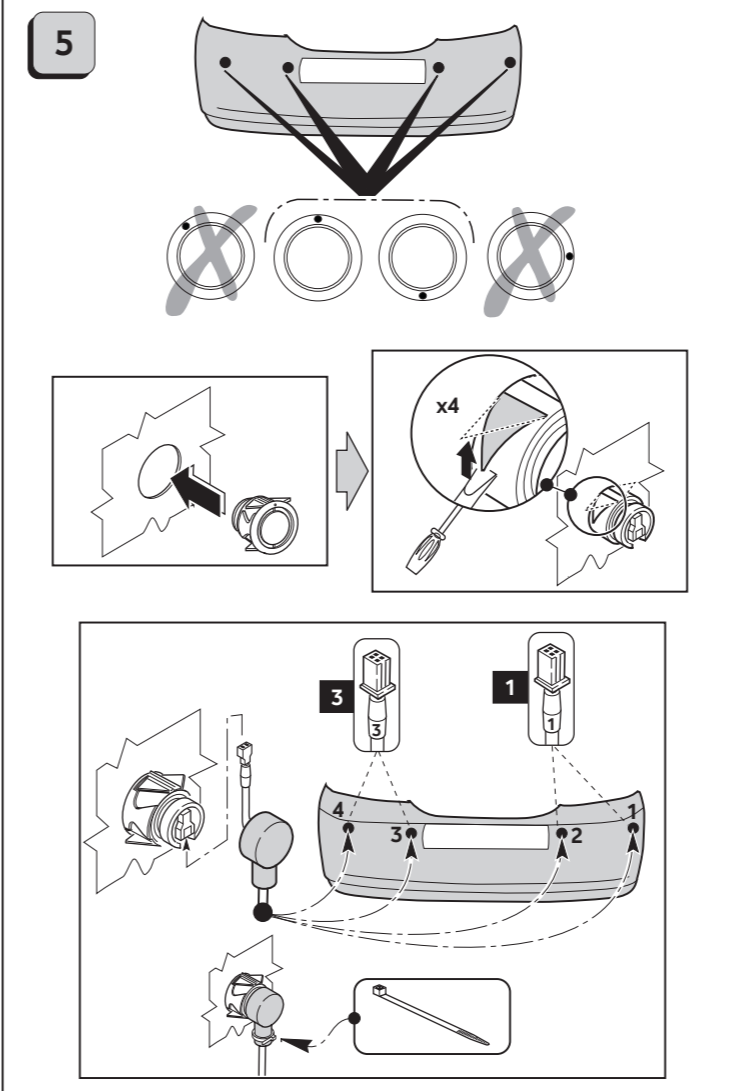
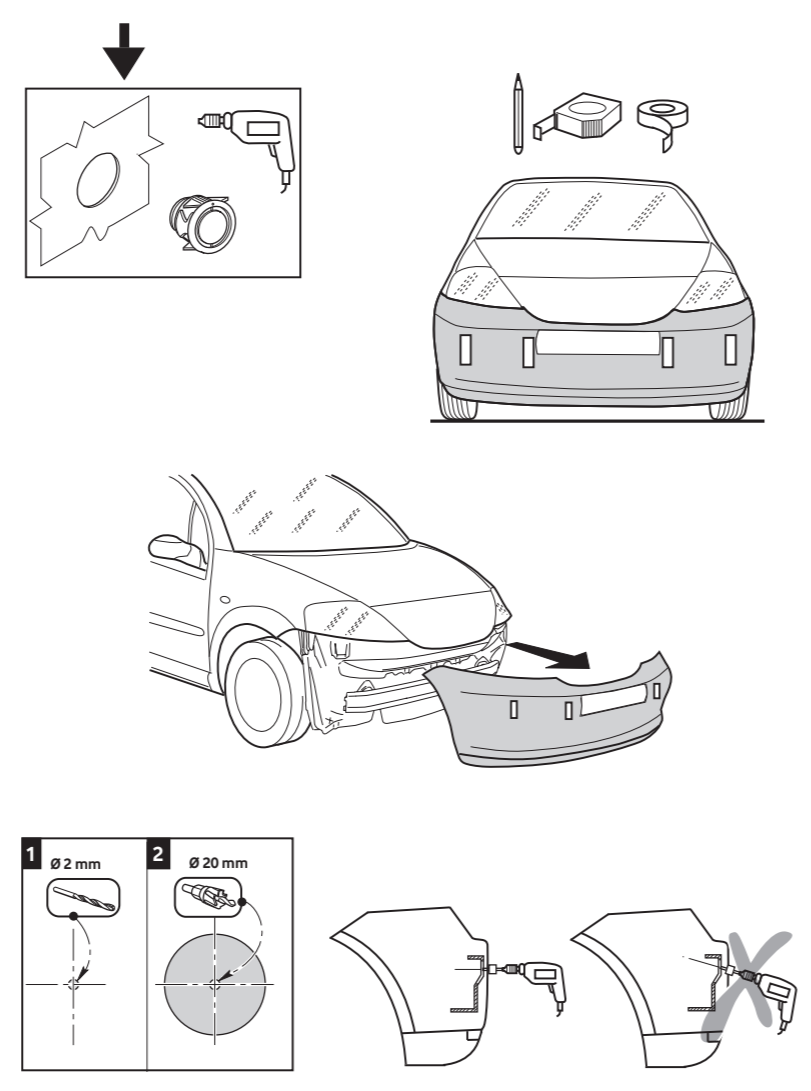
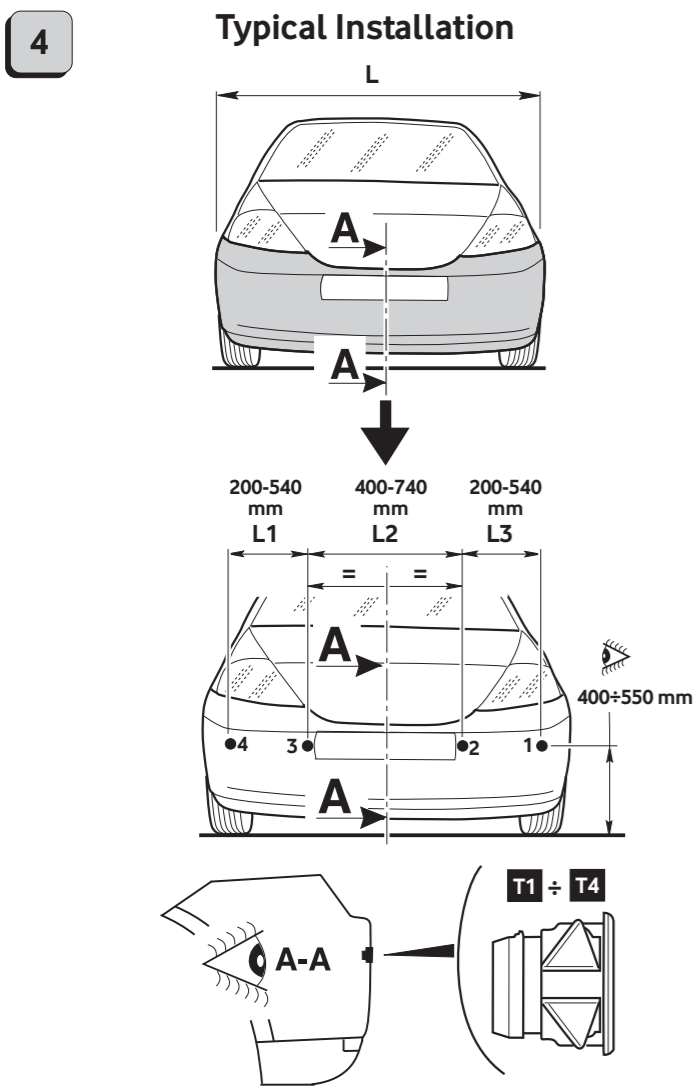
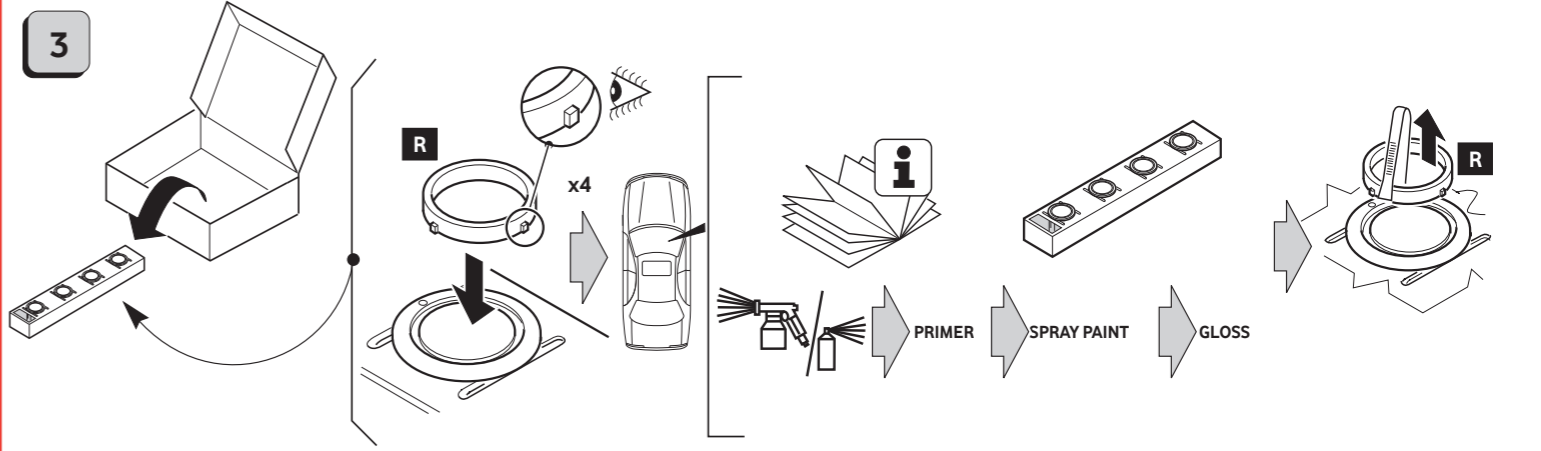
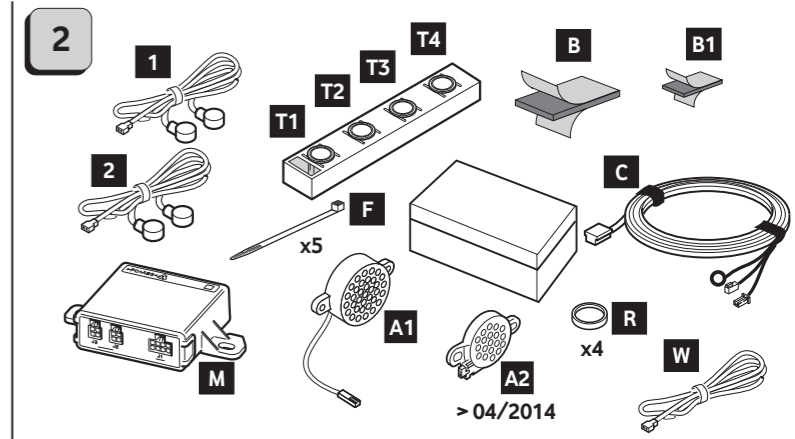
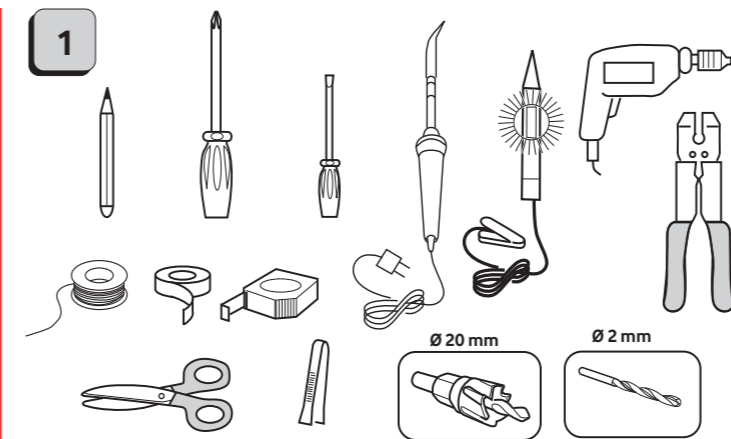
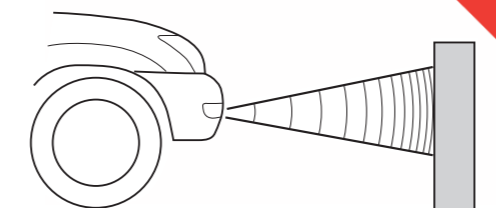


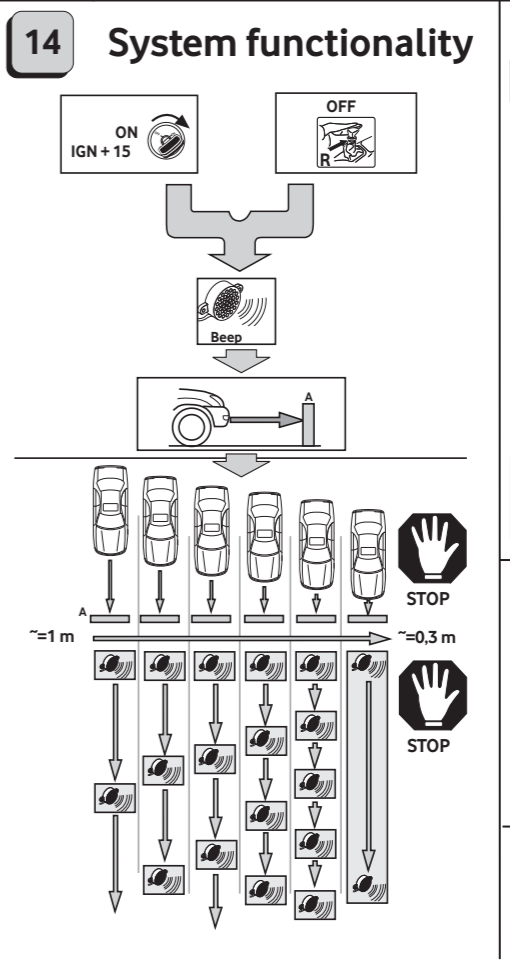
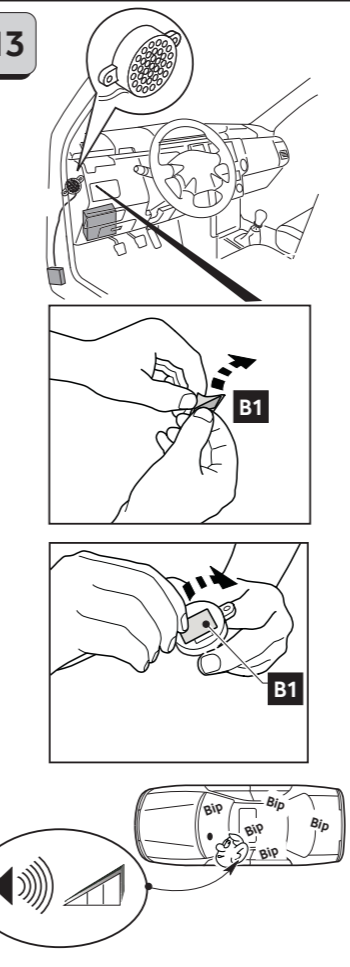
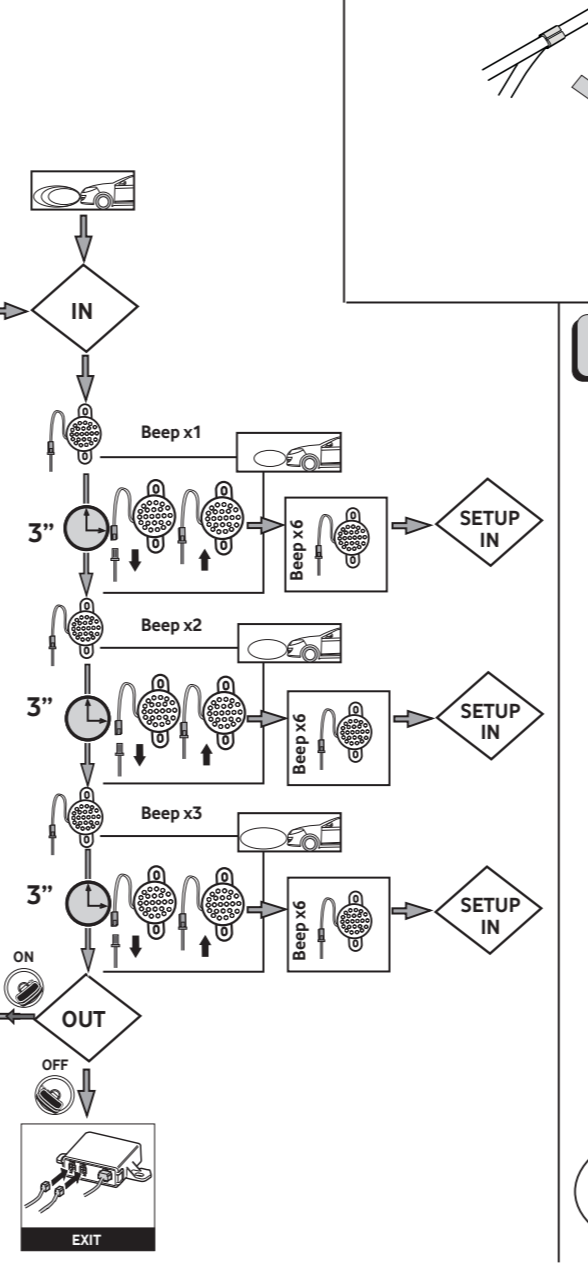
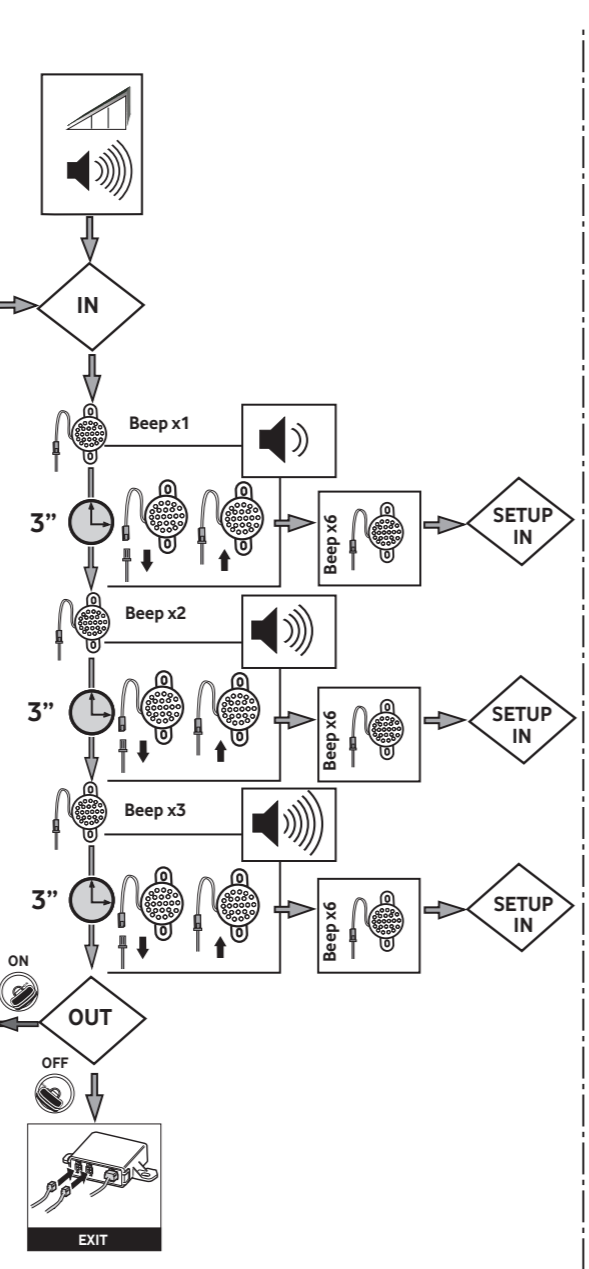
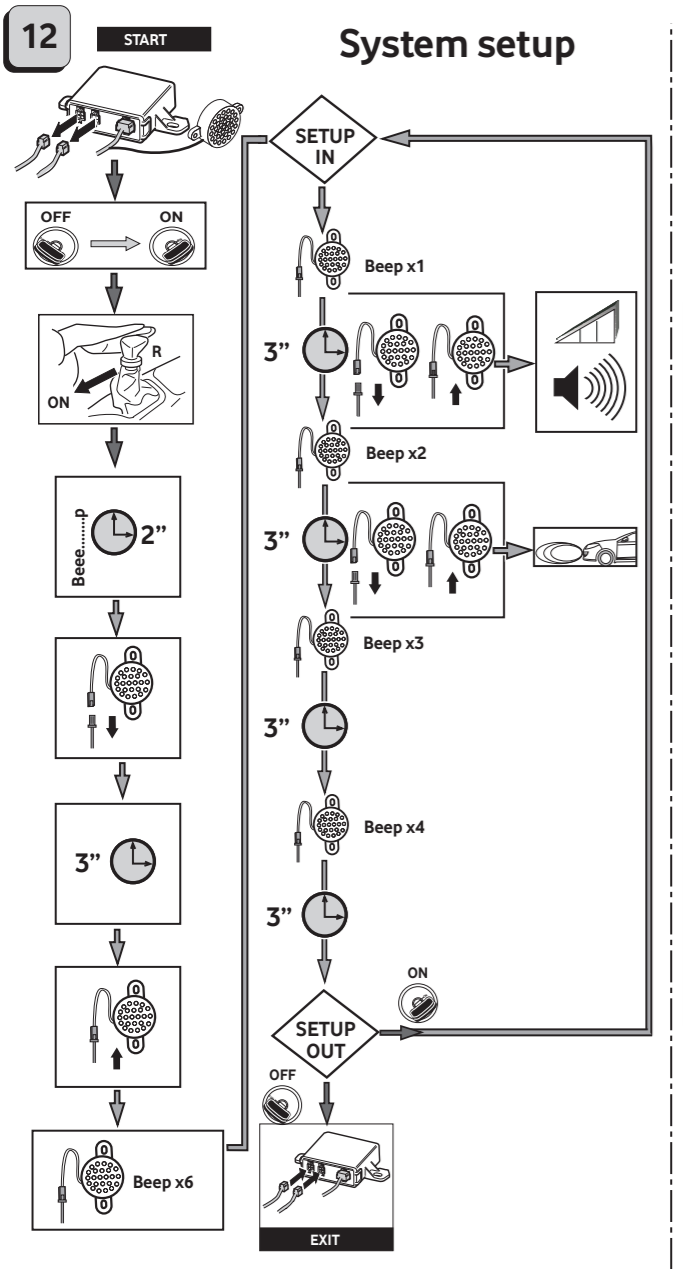
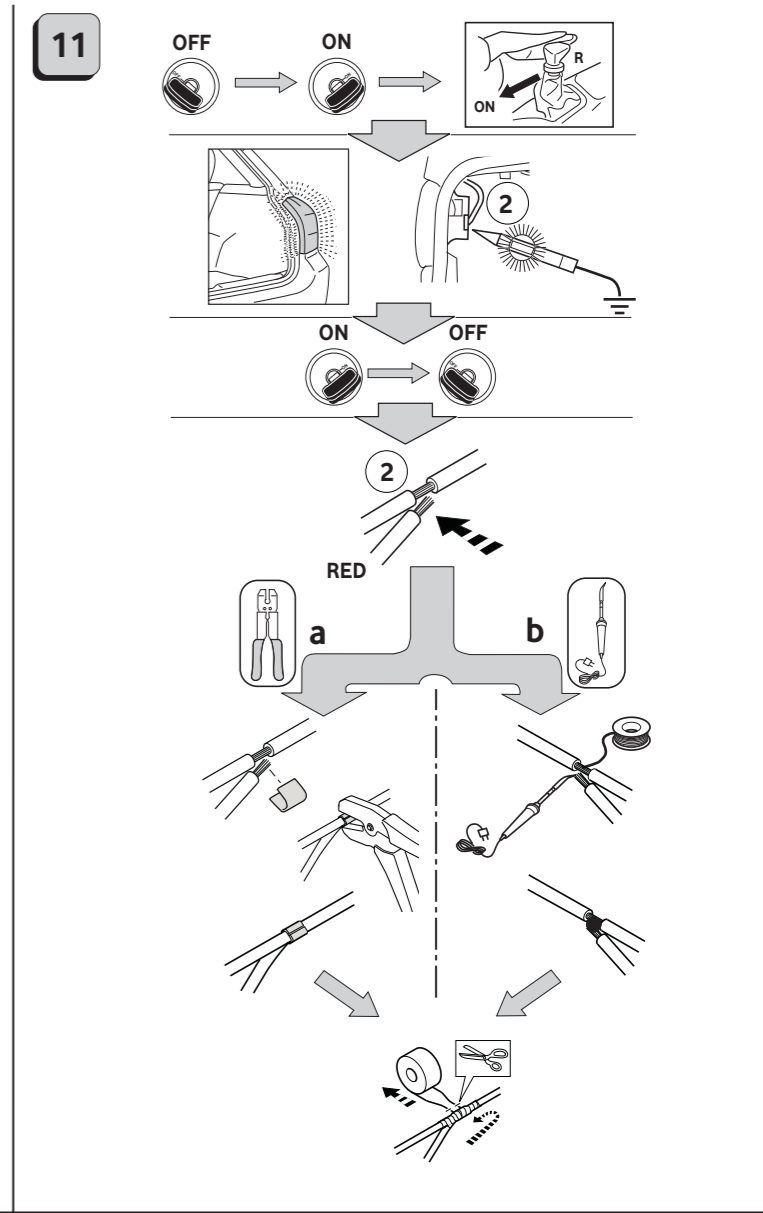
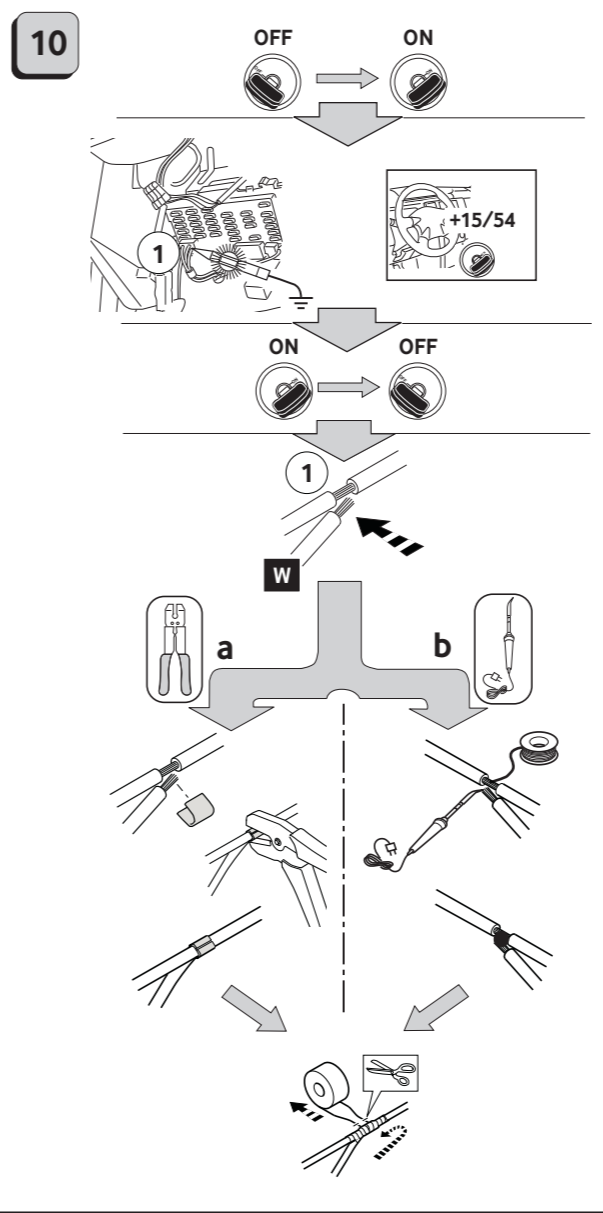
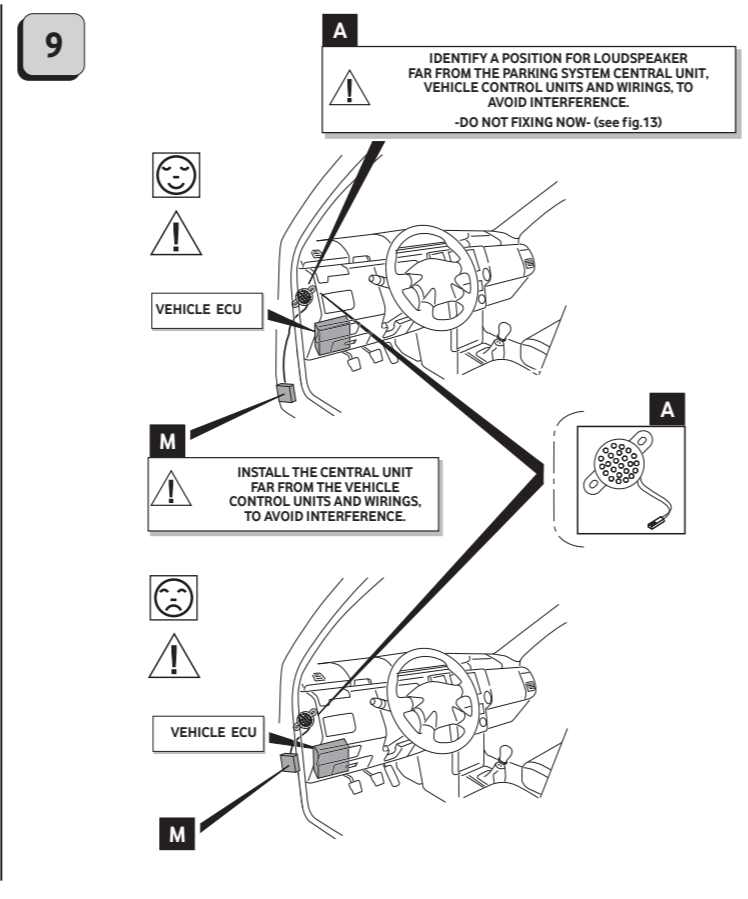
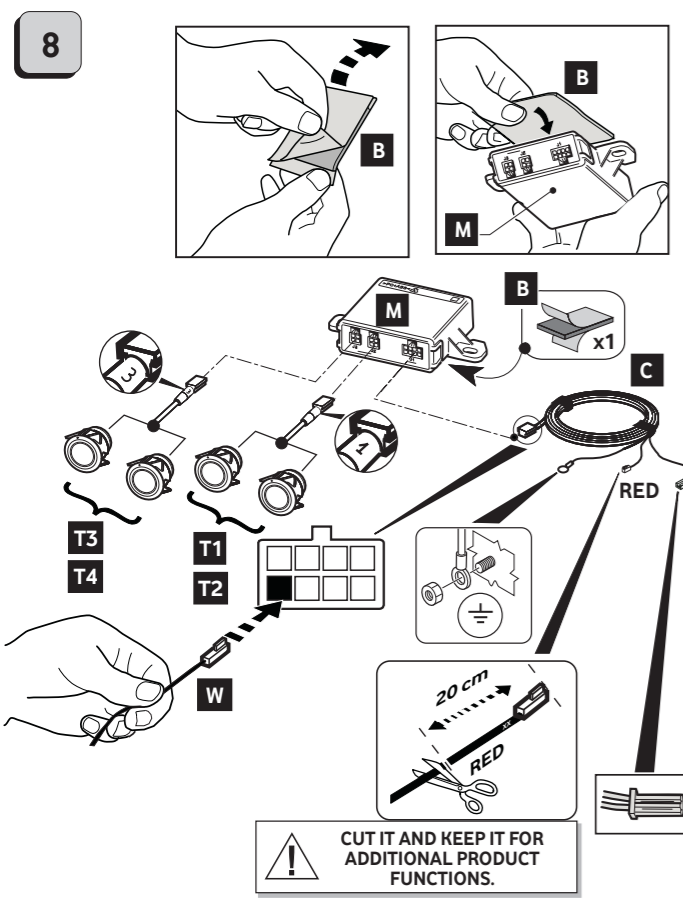


**PARK MASTER
FRONT
F094-F194 - F294**

Vodafone
Power to you

Vodafone Automotive SpA
Via Astico 41 - 21100 VARESE - ITALY
automotive.vodafone.com





12 VDC.

+15/54

A

PARK MASTER

A < 30 mA typ.

-40° C ÷ +85° C

ELECTRICAL/ELECTRONIC SUB-ASSEMBLY WAS APPROVED WITH REGARD TO: E/CE/324-0/CE/TRANS/505 Add 9/Rev 3 Regulation No. 10 UNIFORM PROVISIONS CONCERNING THE APPROVAL OF VEHICLES WITH REGARD TO ELECTROMAGNETIC COMPATIBILITY.

Activation / Deactivation push button.

Order: RV3608EUSAA
(if not contained in the kit)

FOR ADDITIONAL FUNCTIONS SEE "INSTALLATION AND CONFIGURATION GUIDE" ON VODAFONE AUTOMOTIVE SITE.